

## Recombinant E-Cadherin/CDH1/E-cad/CD324 Monoclonal Antibody

catalog number: AN300023P

**Note:** *Centrifuge before opening to ensure complete recovery of vial contents.*

### Description

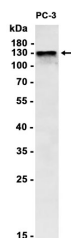
<b>Reactivity</b>	Human
<b>Immunogen</b>	Recombinant Human E-cadherin / CDH1 / Cadherin-1 / E-Cad protein
<b>Host</b>	Rabbit
<b>Isotype</b>	IgG
<b>Clone</b>	A1133
<b>Purification</b>	Protein A
<b>Buffer</b>	0.2 µm filtered solution in PBS

### Applications

### Recommended Dilution

**WB:** 1:1000-1:20000; **IHC:** 1:200-1:500; **ICC/IF:** 1:200-1:1000; **FC:** 1:20

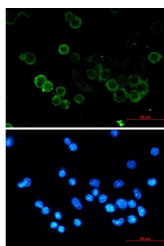
### Data



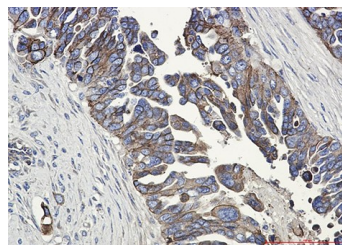
Western blot analysis of extracts from PC-3 cells at 1:1000.

**Observed-MW:80-120kDa,135 kDa**

**Calculated-MW:98 kDa**



Immunofluorescent analysis of MCF-7 cells (green), and DAPI (blue).



Immunohistochemical analysis of paraffin-embedded human Cholangiocarcinoma .

### Preparation & Storage

<b>Storage</b>	Store at -20°C Valid for 12 months. Avoid freeze / thaw cycles.
<b>Shipping</b>	Ice bag

### Background

#### For Research Use Only

This gene encodes a classical cadherin of the cadherin superfamily. Alternative splicing results in multiple transcript variants, at least one of which encodes a preproprotein that is proteolytically processed to generate the mature glycoprotein. This calcium-dependent cell-cell adhesion protein is comprised of five extracellular cadherin repeats, a transmembrane region and a highly conserved cytoplasmic tail. Mutations in this gene are correlated with gastric, breast, colorectal, thyroid and ovarian cancer. Loss of function of this gene is thought to contribute to cancer progression by increasing proliferation, invasion, and/or metastasis. The ectodomain of this protein mediates bacterial adhesion to mammalian cells and the cytoplasmic domain is required for internalization. This gene is present in a gene cluster with other members of the cadherin family on chromosome 16. [provided by RefSeq, Nov 2015]

## For Research Use Only

Toll-free: 1-888-852-8623  
Web: [www.elabscience.com](http://www.elabscience.com)

Tel: 1-832-243-6086  
Email: [techsupport@elabscience.com](mailto:techsupport@elabscience.com)

Fax: 1-832-243-6017

Rev. V1.4